

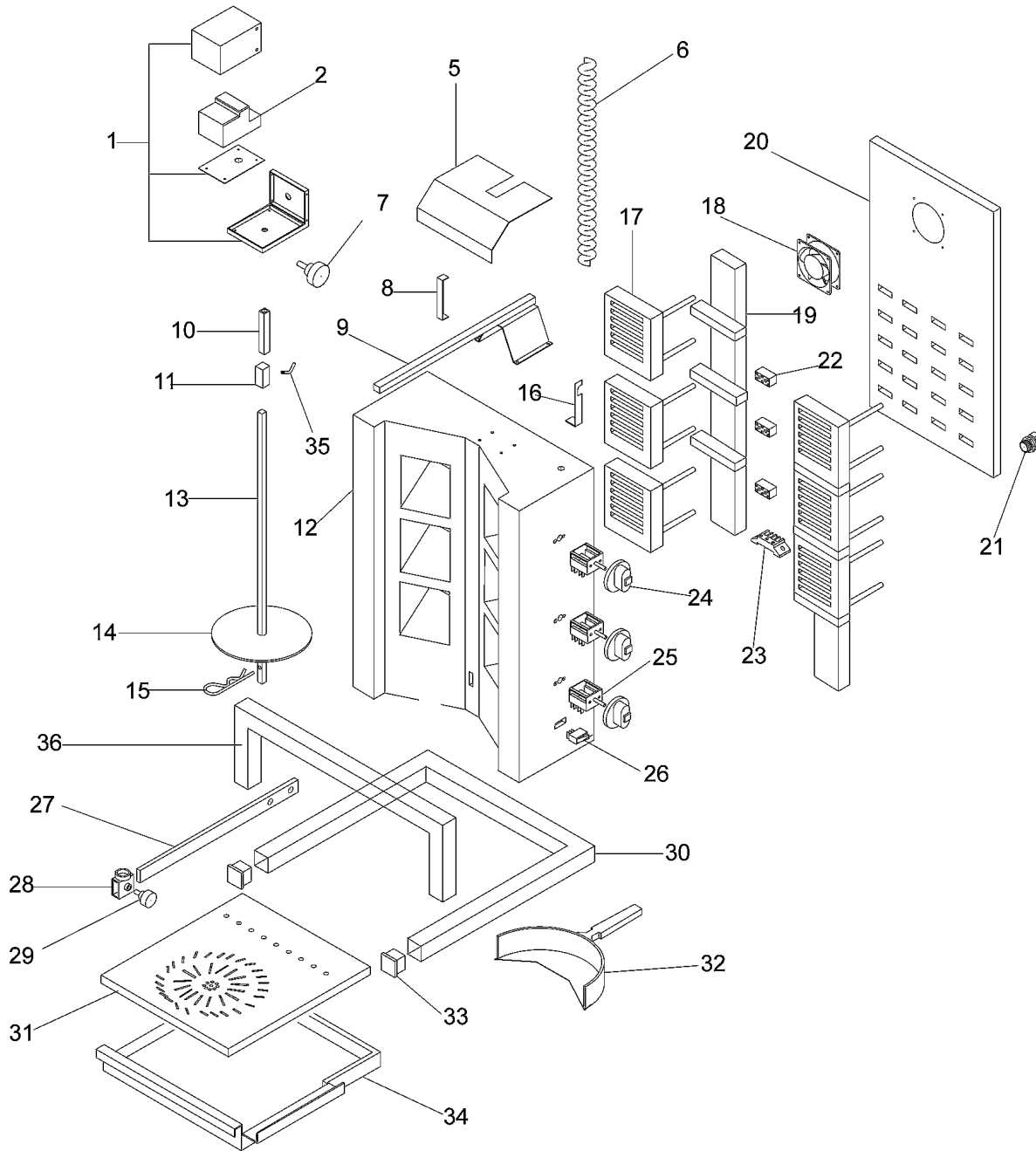


**SPARE PARTS**  
**TAVOLA RICAMBI**

**gyr40-60-80-100**  
0

SPEC.	N.	CODE	DENOMINAZIONE - DENOMINATION	PRICE
Assembly	1	CO5375	Base of motor - Base motore	€ 85.00
230V/1Ph/50Hz	2	CO0725	Motor - Motore	€ 65.50
	5	CO5376	Protection - Protezione	€ 33.00
	6	CO8513	Scabbard - Guaina	€ 37.80
	7	CO0726	Knob - Pomello	€ 12.00
	8	CO5377	Support - Supporto	
(GYR60)	9	CO8445	Bracket - Staffa	
	10	CO0727	Pipe - Tubo	€ 25.60
	11	CO0728	Joint - Giunto	€ 12.00
(GYR100)	13	CO0730	Rod - Asta	€ 63.00
(GYR80)	13	CO5793	Rod - Asta	€ 55.20
(GYR60)	13	CO5794	Rod - Asta	
(GYR40)	13	CO6022	Rod - Asta	€ 41.60
	14	CO0731	Flat - Piatto	€ 7.50
	15	CO0732	Clip - Clip	€ 2.50
	16	CO5379	Bracket - Staffa	
230V/1Ph/50-60Hz	* 17	CO0751	Resistance - Resistenza	€ 78.80
230V/1Ph/50Hz	* 18	SL3183	Fan - Ventola	€ 22.40
(GYR80)	20	SL3859	Cover - Coperchio	€ 30.00
(GYR60)	20	SL3866	Cover - Coperchio	€ 29.00
(GYR40)	20	SL5007	Cover - Coperchio	€ 24.50
(GYR100)	20	SL5008	Cover - Coperchio	€ 34.70
	22	CO5380	Terminal box - Morsettiera	€ 9.00
	23	CO5381	Connector - Connettore	€ 9.00
	24	SL3550	Knob - Pomello	€ 2.50
	25	CO0752	Switch - Interruttore	€ 27.20
	26	CO1269	Switch - Interruttore	€ 5.90
	27	CO5378	Support - Supporto	
29/02/12 f.p.(*)	28	CO0738	Support - Supporto	
	28	CO5722	Support - Supporto	€ 30.00
	29	CO0739	Knob - Pomello	€ 12.00
	31	CO5382	Surface - Piano	€ 35.00
	32	CO0406	Scoop - Paletta	
	33	CO5384	Collecting tray - Cassetto raccoglitore	
	34	CO5383	Cap - Tappo	€ 38.00
	35	CO7665	Key - Chiave	

\*Ricambio consigliato - Advised spare parts



POS. CODE	
1	CO5375
2	CO0725
5	CO5376
6	CO8513
7	CO0726
8	CO5377
9	CO8445
10	CO0727
11	CO0728
13	CO0730
13	CO5793
13	CO5794
13	CO6022
14	CO0731
15	CO0732
16	CO5379
17	CO0751
18	SL3183
20	SL3859
20	SL3866
20	SL5007
20	SL5008
22	CO5380
23	CO5381
24	SL3550
25	CO0752
26	CO1269
27	CO5378
28	CO0738
28	CO5722
29	CO0739
31	CO5382
32	CO0406
33	CO5384
34	CO5383
35	CO7665