

R&D	NAME	SIGNATURE	DATE	MATERIAL	VERSION NO
DRAWING	S.GURCU				
CONTROL	S.GURCU				
CONSENT	M.HACI			THICKNESS	REVISION
	MEASUREMENTS MILLIMETER			WEIGHT (gr.)	SCALE

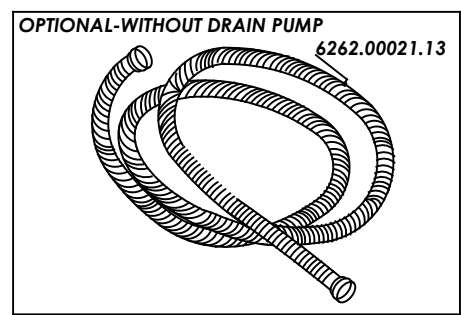
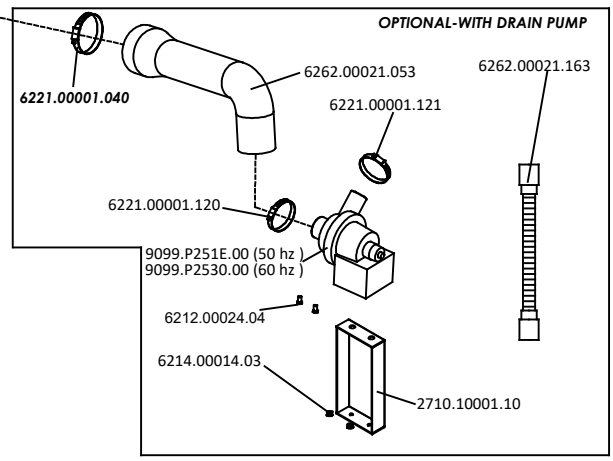
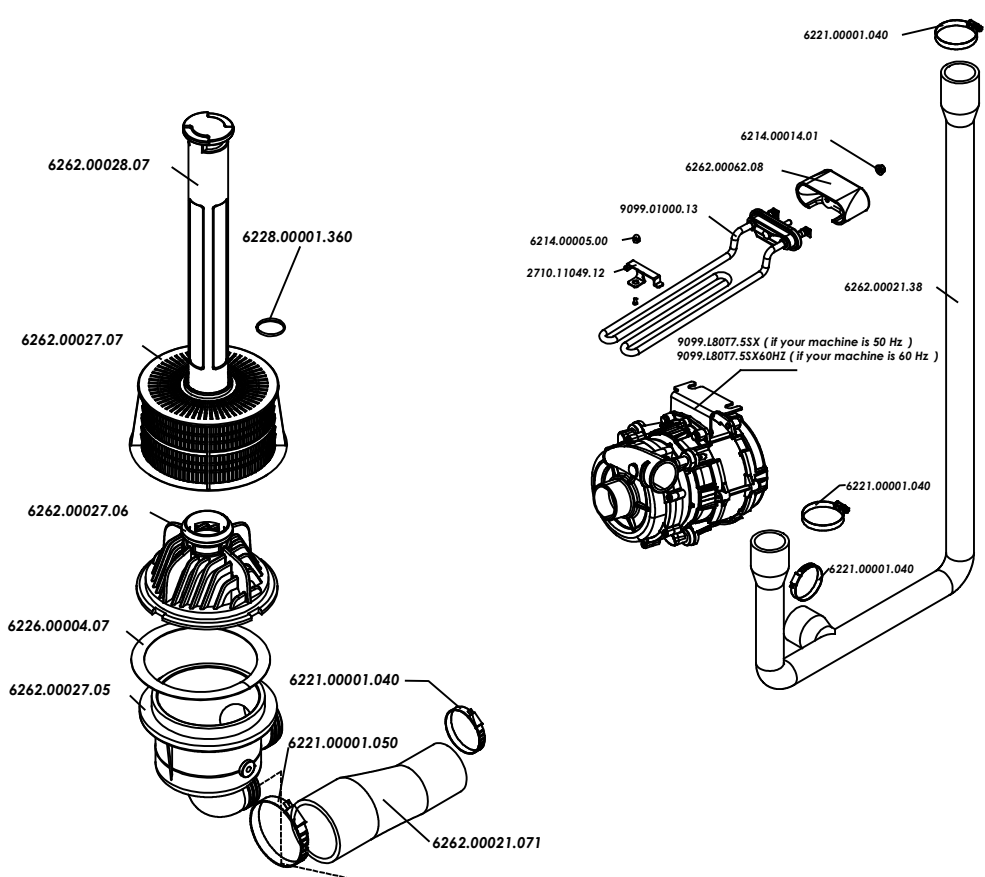


GROUP NAME: BODY GROUP EXPLODED VIEW

PICTURE NO

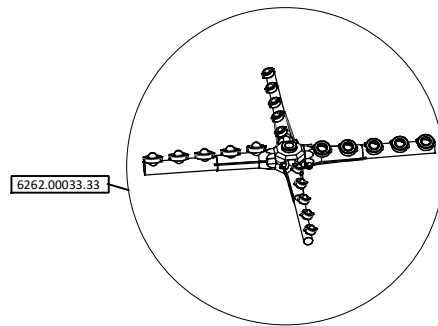
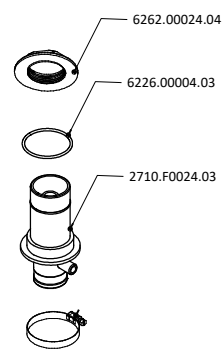
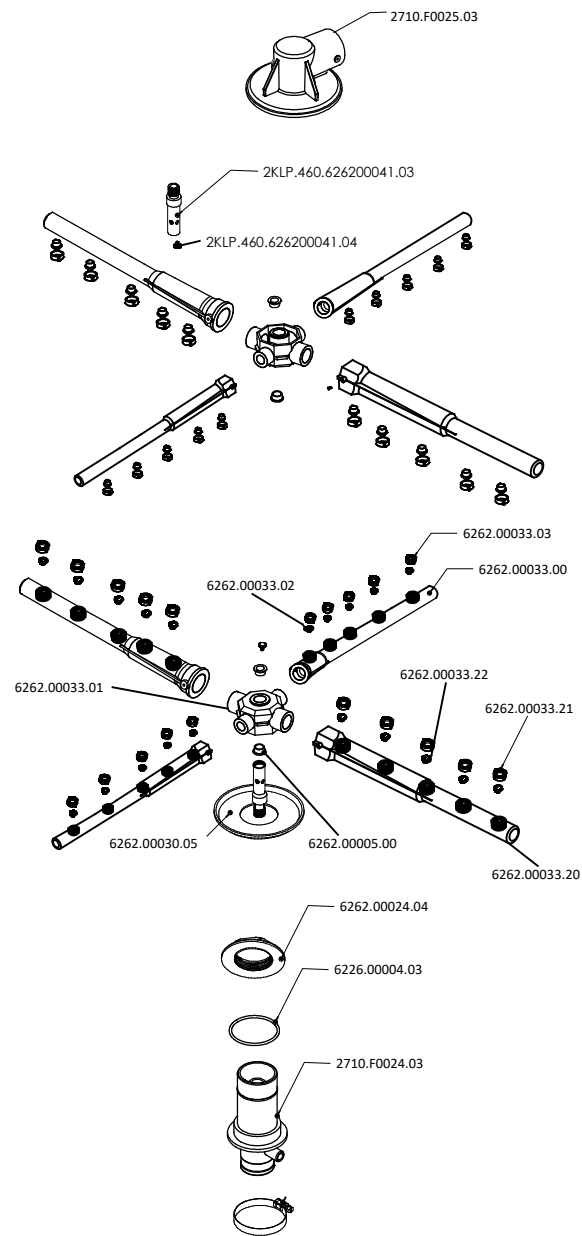
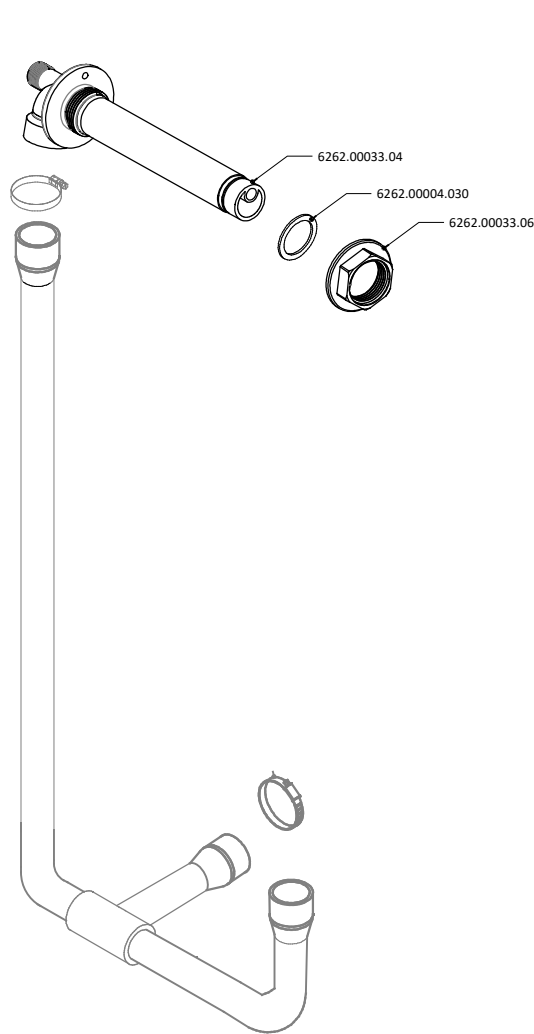
Hood Type Dishwasher - Body Group-Digital Codes/Item Names	
2710.01000.25	Hood H type hood body welded assembly
6262.00047.041	Handle spring plate blank filling part
6262.00047.042	Handle support plate blank filling part-right
2KLP.460.626200041.044	Hood H type spring bushing part
2710.00502.99	Handle cut cover
6226.00016.00	Rubber bumper
6262.00058.07	Clamp assembly for hood pipe arm Q25 polyemid
2710.01000.17	Hood H type Handle welded assembly
6262.00022.13	Hood handle side guide
2710.11002.25	Hood support bracket
2710.10002.21	Rear external cover
6262.00003.09	Hood pulley
2710.57885.01	Hood type rack holder
2710.F0001.01	Magnet Group
6262.00043.030	Digital Screen
2710.10004.07	Door switch and magnet group plate
2710.10025.28	Side complete in rack holder
6214.00013.16	M5 nylon insert lock nut
2710.1080H.05	Stainless Steel Strainer with handle
2710.550.00120030.0.01	Hood H type spacer for hinges
6262.00047.05	Hood spring
6262.00066.04	Bushing for spring hook tie-rod
6262.00032.05	Hook tie-rod for spring M10 partial threaded
2710.550.00300030.0.01	Washer for tie-rod
2710.11001.08	Front panel
6262.00003.06	Slide pulley bolt
6262.00003.060	Spring connection shaft
6262.00026.03	Air trap (plastic)
6226.00006.02	Gasket for air trap
6606.00001.12	Detergent&rinse aid hose seal
6213.00001.01	M4x10 INOX PAN HEAD CROSS RECESSES SCREW
6214.00014.04	M5 hex nut with flange
6214.00001.05	6214.00001.05
6213.00001.10	M5x10 INOX PAN HEAD CROSS RECESSES SCREW
6214.00013.15	M8 nylon insert lock nut
6215.00001.03	M8 washer supporting ring
6214.00013.18	M4 nylon insert lock nut
6262.00018.18	Hood H type connection equipotential label
6262.00018.69	Hood H type caution label 100x55mm
6262.00018.73	Hood H type water discharge 80x30mm
6262.00018.76	Hood H type for supply inlet cable 80x30mm
6261.00014.320	Hood H type high voltage warning label 50x50mm
2710.10004.06	Thermostat prob fixing plate
2710.11002.21	Spring suspension bracket
6262.00047.040	Handle support plate blank filling part-left
6232.00005.16	Door switch
6213.00001.01	M4*10 YSB SCREW
6268.00025.13	Safety Limit Thermostat for washing tank
9099.00001.85	Pressure switch connection cable

R&D	NAME	SIGNATURE	DATE	MATERIAL	VERSION NO		
DRAWING	S.GURCU						
CONTROL	S.GURCU						
CONSENT	M.HACI			THICKNESS	REVISION	GROUP NAME: BODY GROUP EXPLODED VIEW	
		MEASUREMENTS MILIMETER		WEIGHT (gr.)	SCALE	PICTURE NO	



Hood Type Dishwasher- Washing Group Codes/Item Names	
6262.00028.07	Hood H type drain plug
6228.00001.360	Drain plug o-ring
6262.00027.07	Suction filter top part
6262.00027.06	Suction filter center part
6226.00004.07	Suction filter seal
6262.00027.05	Suction filter lower part
6221.00001.050	Hose clamp 50-70 mm
6221.00001.040	Hose clamp 40-60 mm
6262.00021.071	Washing pump connecting Hose
9099.L80T7.SSX	Washing Pump (for 50 hz machines)
9099.L80T7.SSX60HZ	Washing Pump (for 60 hz machines)
6262.00021.38	Hood type washing distribution hose
2710.11049.12	Tank heater fixing plate
9099.01000.13	Washing Tank heater 2000W 230V
6262.00062.08	Washing tank heater cover
6214.00005.00	M5 domed cup nut
6214.00014.01	M6 hex nut with flange
6262.00021.13	Water discharge hose Ø30x25 cm double sided w/o drain pump
6262.00021.053	Drain pump connection hose
6221.00001.121	Hose clamp 20-32 mm
6221.00001.120	Hose clamp
6214.00014.03	Nut
6262.00021.163	Drain hose (for the models that have drain pump)
6262.00021.13	Drain hose (for the models that does not have drain pump)
9099.P251E.00	Drain pump (for 50 Hz machines)
9099.P2530.00	Drain pump (for 60 Hz machines)
2710.10001.10	Drain pump connection plate

R&D	NAME	SIGNATURE	DATE	MATERIAL	VERSION NO	GROUP NAME: WASHING GROUP EXPLODED VIEW	
DRAWING	S.GURCU						
CONTROL	S.GURCU						
CONSENT	M.HACI			THICKNESS	REVISION	SCALE	PICTURE NO
MEASUREMENTS MILIMETER				WEIGHT (gr.)			

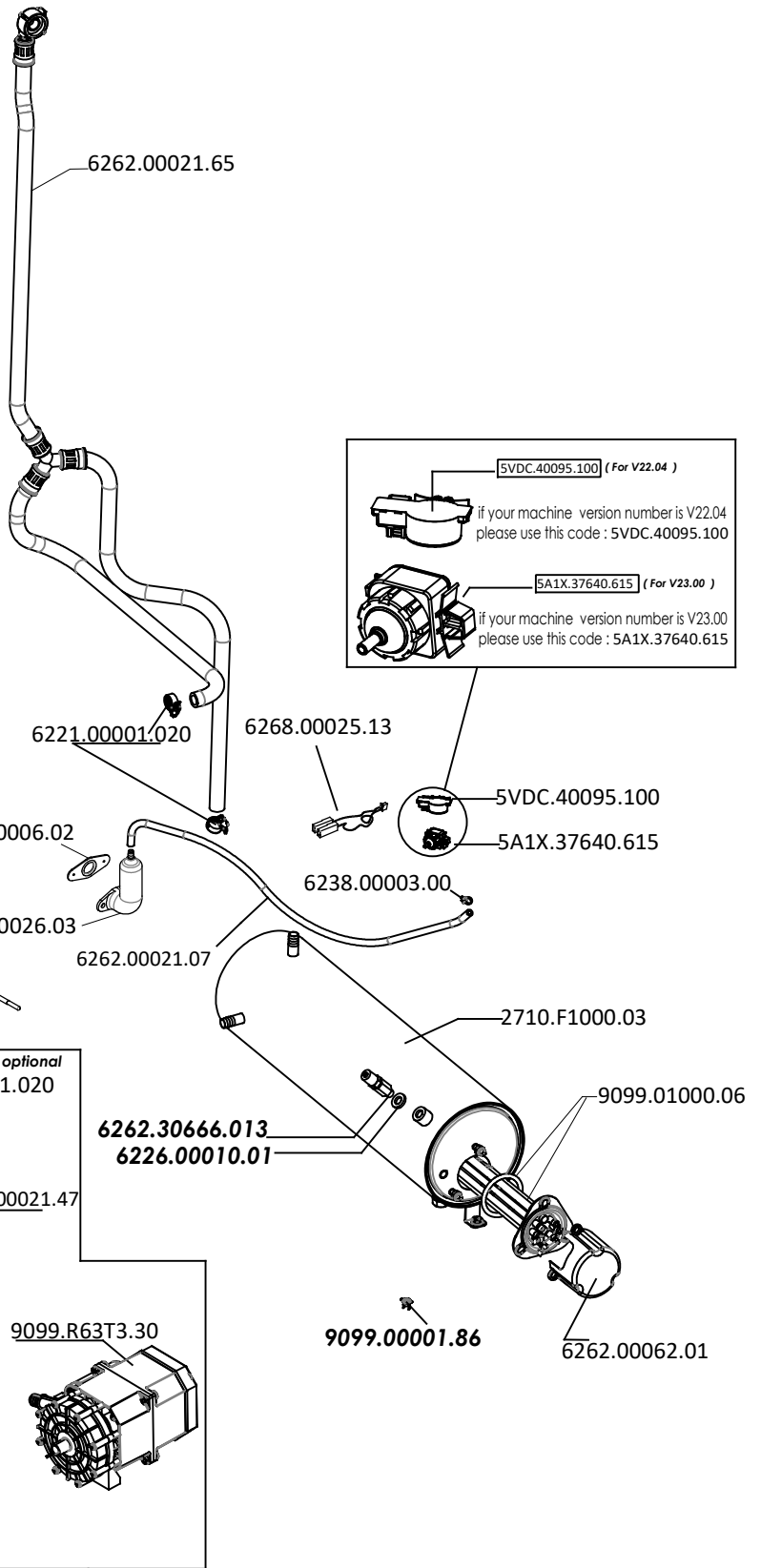


Hood Type Dishwasher - Spray arm Group	
Codes/Item Names	
2710.F0024.03	Water inlet bottom
2710.F0025.03	Water inlet elbow top
6262.00024.04	Water inlet nut bottom
6226.00004.03	Water inlet seal bottom
6262.00033.04	Washing Hose Top Part (PP)
6262.00004.030	Washing Hose Top Part Seal
6262.00033.06	Washing Hose Top Part Nut
6262.00033.33	Washing Arm
6262.00033.00	Washing Arm (Without Nut&Nozzle)
6262.00033.03	Washing Arm Nozzle
6262.00033.02	Washing Arm Nut
6262.00033.20	Rinsing Arm(Without Nut&Nozzle)
6262.00033.21	Rinsing Arm Nozzle
6262.00033.22	Rinsing Arm Nut
6262.00033.01	Collector(washing&rinsing)
6262.00005.00	Washing Arm Part (Plastic Part)
6262.00030.05	Water inlet part bottom
2KLP.460.626200041.03	Navel axle
2KLP.460.626200041.04	Special Screw M8

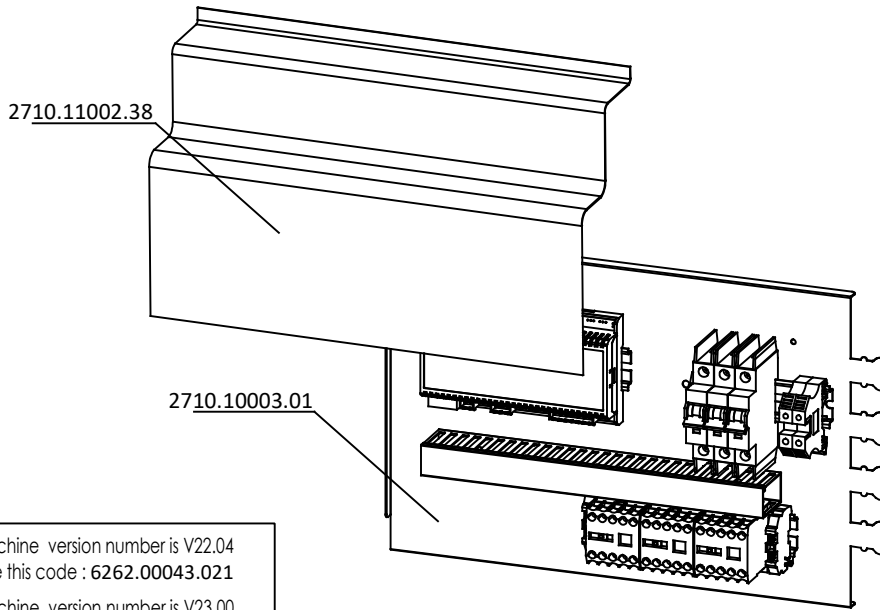
R&D	NAME	SIGNATURE	DATE	MATERIAL	VERSION NO	GROUP NAME: SPRAY ARM GROUP EXPLODED VIEW
DRAWING	S.GURCU					
CONTROL	S.GURCU					
CONSENT	M.HACI			THICKNESS	REVISION	PICTURE NO
MEASUREMENTS MILIMETER			WEIGHT (gr.)		SCALE	

Hood Type Dishwasher - Rinsing Group

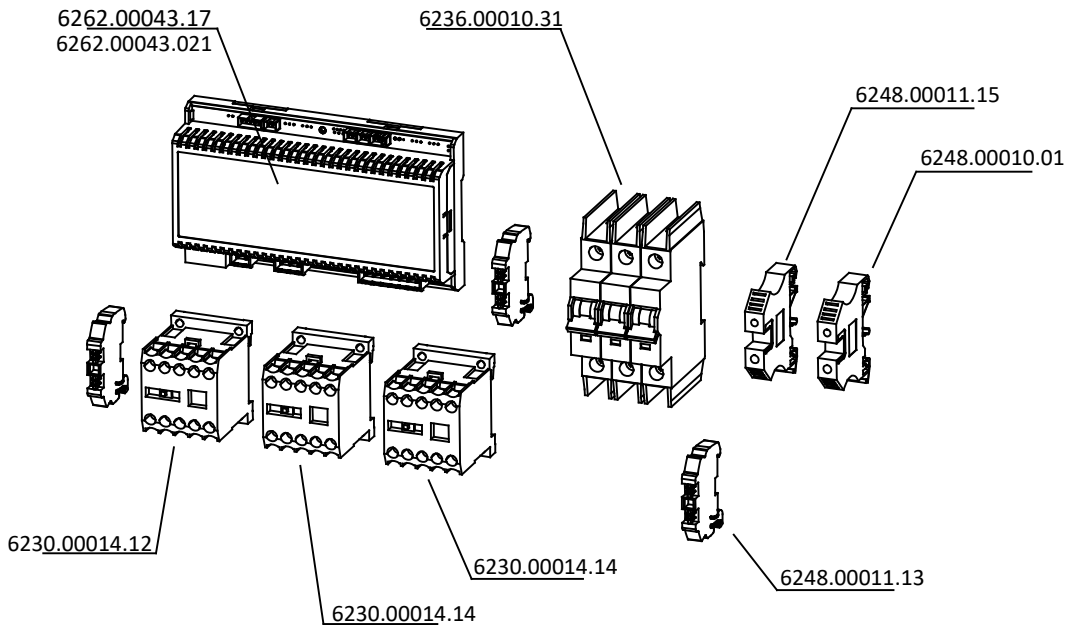
Codes/Item Names	
6262.00021.65	HOSE, RINSING Y PART OBM 1080 HALF TANK (410 X 650 X 460)
5VDC.40095.100	Pressure switch (for V22.04)
5A1X.37640.615	Pressure switch (for V23.00)
6262.00021.07	Pressure switch connection hose Q8*4mm
6226.00006.02	Gasket for air trap
6262.00026.03	Air trap (Plastic)
6262.00021.61	HOSE 1/2 42 CM
6262.00021.12	3/4" Water Inlet Hose
9099.01000.06	HEATING ELEMENT 9000 W IRCA INCOLOY 800 (1080-1500-2000 BOILER)
2710.F1000.03	1080 BOILER TANK (OZTI HOOD TYPE)
6262.30666.013	Rinse-aid connection check valve
6226.00010.01	Klinger gasket 1/2"
6221.00001.020	Clamp 12x20
6262.00021.61	HOSE 1/2 42 CM
6262.00043.011	Boiler / Washing tank prob
6262.00021.47	HOSE 1/2 30 CM
9099.R63T3.30	RINCING PUMP
6214.00014.01	M6 hex nut with flange
6268.00025.13	PRESSURE SWITCH CONNECTION CABLE
6238.00003.00	CLAMP CV-100 2.5 (100 AD/PK)
6221.00001.020	Clamp 12x20
9099.FPD18.0A	Water inlet valve
9099.00001.86	THERMOSTAT 95 C T1/11-95/80C
6262.00062.01	Boiler tank heater cover



R&D	NAME	SIGNATURE	DATE	MATERIAL	VERSION NO	GROUP NAME: RINSING GROUP EXPLODED VIEW	
DRAWING	S.GURCU					THICKNESS	REVISION
CONTROL	S.GURCU					WEIGHT (gr.)	SCALE
CONSENT	M.HACI					MEASUREMENTS MILIMETER	PICTURE NO



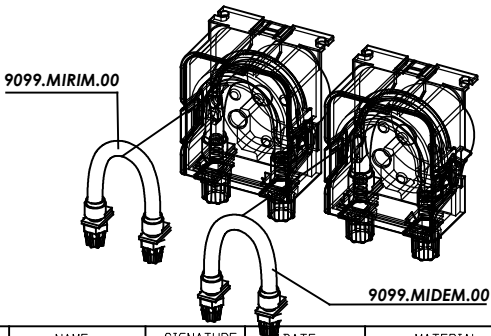
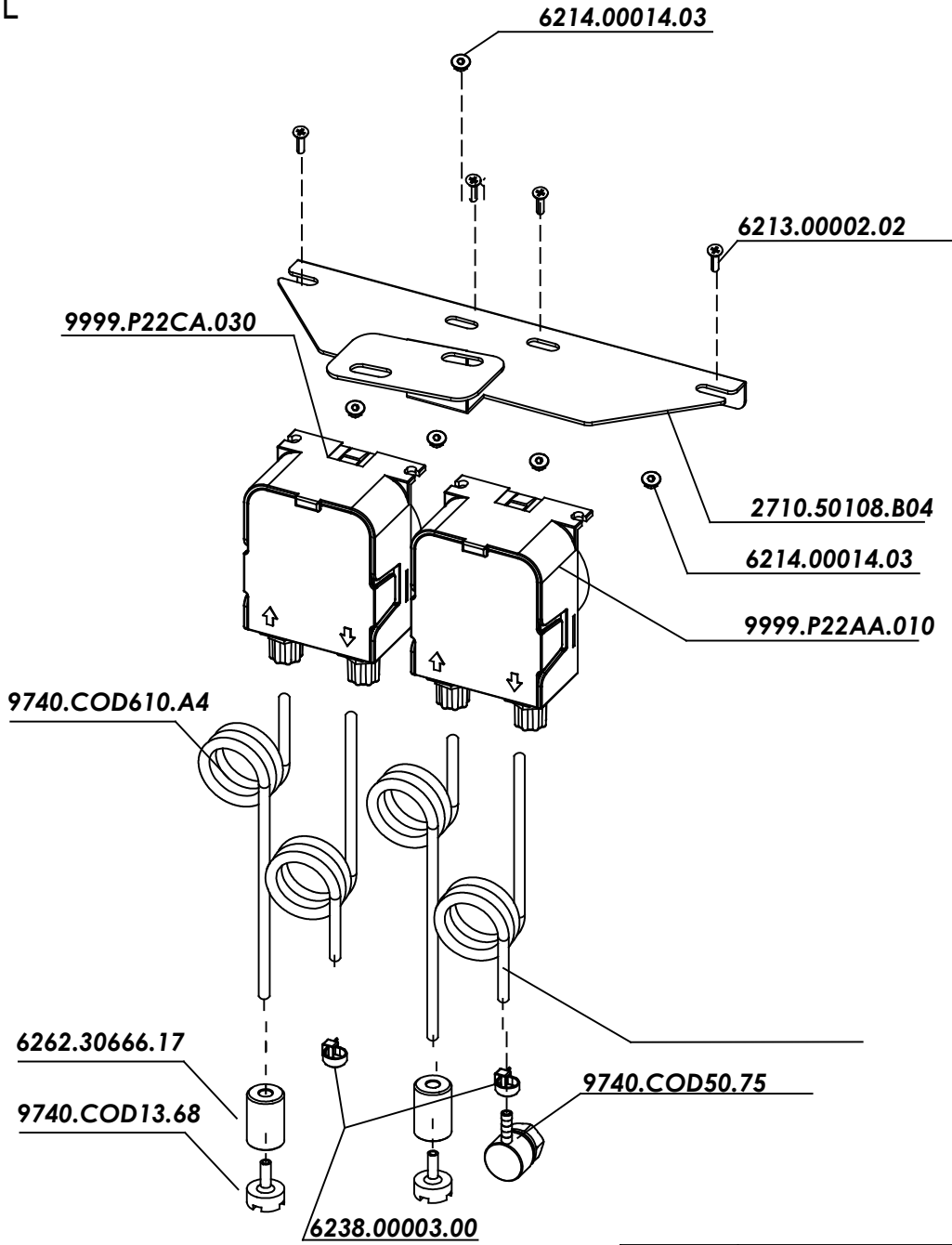
if your machine version number is V22.04
 please use this code : 6262.00043.021
 if your machine version number is V23.00
 please use this code 6262.00043.017



Hood Type Dishwasher- Electrical Group	
Codes/Item Names	
2710.11002.38	Pvc transparent curtain for electrical panel
2710.10003.01	Stainless steel Electrical panel
6262.00043.17	Touch Power box
6236.00010.31	Automat C CLS4-C25/3 (3x25A)
6248.00011.15	Terminal AVK 10 Blue
6248.00010.01	Terminal PEK-10 KLEMSA
6248.00011.13	KLEMS STOPPER WGD-1
6230.00014.14	CONTACTOR DILM 12-01
6230.00014.12	CONTACTOR DILEEM-10 XTMC6A10
6262.00043.17	MAIN BOARD LCD (TOUCH) + MEMBRANE (OZT-BYM-MK1-PWM)- V23.00
6262.00043.021	MAIN BOARD LCD (TOUCH) ELEKTRONICAL (OZT-BYM-MK1)-V22.04

R&D	NAME	SIGNATURE	DATE	MATERIAL	VERSION NO		
DRAWING	S.GURCU						
CONTRDL	S.GURCU						
CONSENT	M.HACI			THICKNESS	REVISION	GROUP NAME: ELECTRICAL GROUP EXPLODED VIEW	
		MEASUREMENTS MILIMETER		WEIGHT (gr.)	SCALE	PICTURE NO	

OPTIONAL



Detergent/Rinse aid pump group (optional)	
Item names/Codes	
2710.50108.B04	Detergent / Rinse aid pump connection plate
6214.00014.03	M4 hex nut with flange
6213.00002.02	M4*16 YHB Screw
9999.P22CA.030	Rinse aid pump
9740.COD610.A4	Rinse aid pump hose (blue) (4 meters)
9740.COD13.68	Detergent/Rinse aid pump plastic filter
6262.30666.17	Detergent/Rinse aid pumps tainles steel weight
6238.00003.00	Cable tie
9999.P22AA.010	Detergent pump
9740.COD61.A4	Detergent pump hose (transparent) (4 meters)
9740.COD50.75	Detergent pump tank conexion part
9099.MIDEM.00	Inner Detergent pump tube
9099.MIRIM.00	Inner rinse aid pump tube

R&D	NAME	SIGNATURE	DATE	MATERIAL	VERSION NO	GROUP NAME: DETERGENT/RINSE AID PUMP GROUP	
DRAWING	S.GURCU						
CONTROL	S.GURCU						
CONSENT	M.HACI			THICKNESS	REVISION		
		MEASUREMENTS MILIMETER		WEIGHT (gr.)	SCALE	PICTURE NO	